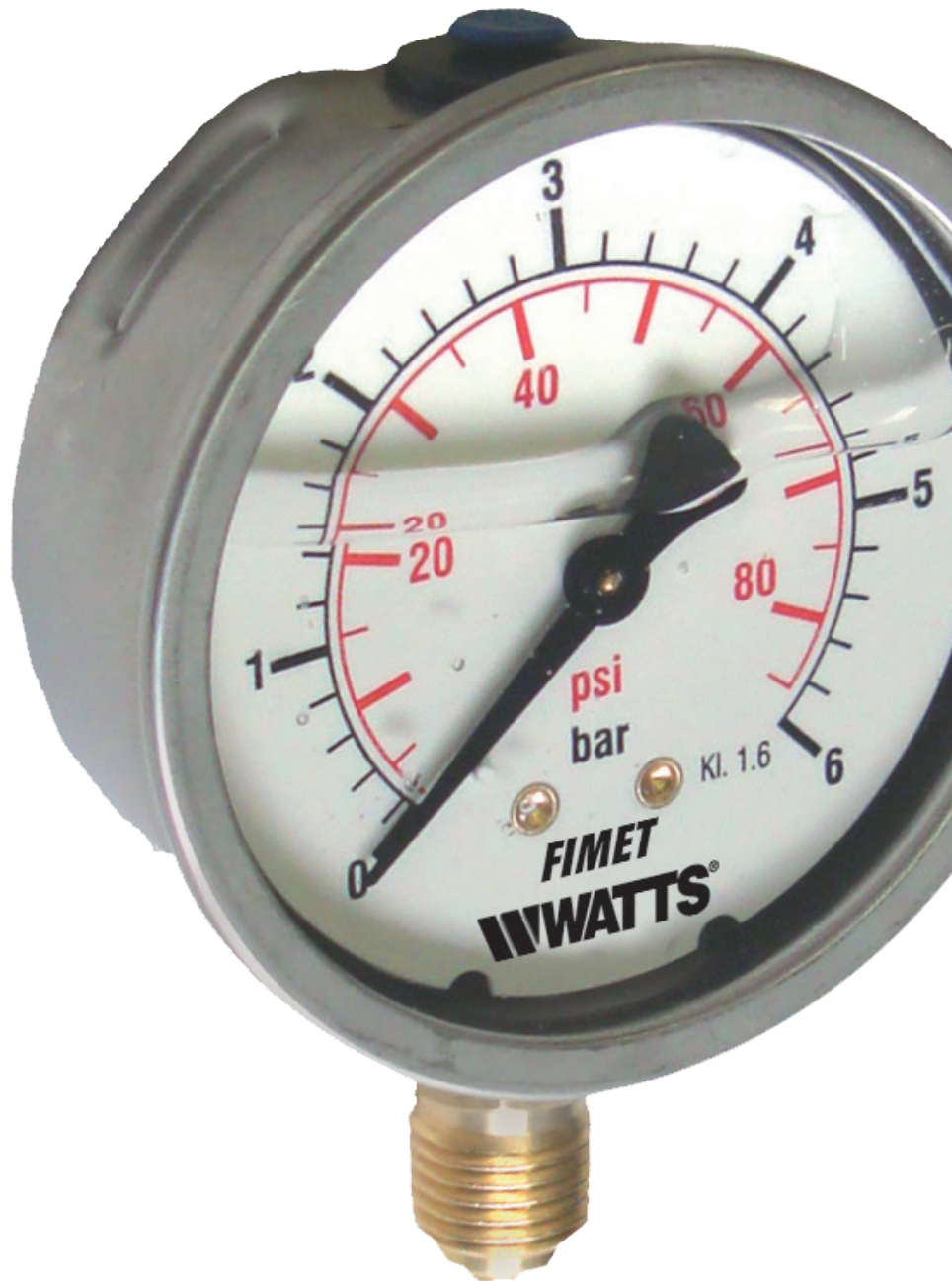


MG1-INOX

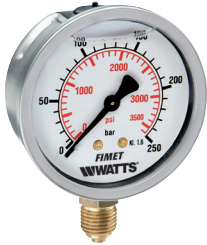
Bourdon tube pressure gauges

Technical Data Sheet



Description

Glycerine filled stainless steel case bottom entry. For pneumatic industry, gases and liquids not viscous, not aggressive and not crystallising.



MG1-INOX 50

DN50 pressure gauges.

Part No	Pressure Range	Connection	Options*	Box/Master	Min. order
	0-2.5 bar/psi	G1/4B		50/50	100
PZ7M2504DJ00	0-4 bar/psi	G1/4B	D	50/50	100
PZ7M2506DJ00	0-6 bar/psi	G1/4B	D	50/50	100
PZ7M2510DJ01	0-10 bar/psi	G1/4B	D	50/50	100
PZ7M2512DJ00	0-12 bar/psi	G1/4B	D	50/50	100
PZ7M2516DJ01	0-16 bar/psi	G1/4B	D	50/50	100
PZ7M2520DJ00	0-20 bar/psi	G1/4B	D	50/50	100
PZ7M2525DJ01	0-25 bar/psi	G1/4B	D	50/50	100
PZ7M2540DJ00	0-40 bar/psi	G1/4B		50/50	100
	0-60 bar/psi	G1/4B		50/50	100
PZ7M2648DJ00	0-100 bar/psi	G1/4B	D	50/50	100
	0-160 bar/psi	G1/4B		50/50	100
PZ7M2660DJ00	0-250 bar/psi	G1/4B	D	50/50	100
	0-315 bar/psi	G1/4B		50/50	100
	0-400 bar/psi	G1/4B		50/50	100
	0-600 bar/psi	G1/4B		50/50	100

MG1-INOX 63

DN63 pressure gauges.



Part No	Pressure Range	Connection	Options*	Box/Master	Min. order
	-76-0 cm Hg	G1/4B		100/100	100
PE309914LF	-1/0 bar/in Hg	G1/4B	D+LF	100/100	10
PE3401DJ00	-1/0.6 bar/psi	G1/4B	D	100/100	100
PE3502DJ00	-1+1.5 bar/in hg	G1/4B	D	100/100	100
PE3504BJ01	-1+3 bar	G1/4B		100/100	100
PE308722	-1+5 bar	G1/4B		100/100	100
PE3510DJ04	-1+9 bar	G1/4B		100/100	100
	-1+15 bar	G1/4B		100/100	100
PE340114LF	0-1 bar/psi	G1/4B	D+LF	100/100	10
PE340214LF	0-1.6 bar/psi	G1/4B	D+LF	100/100	100
PE350314LF	0-2.5 bar/psi	G1/4B	D+LF	100/100	10
PE350414LF	0-4 bar/psi	G1/4B	D+LF	100/100	10
PE350614LF	0-6 bar/psi	G1/4B	D+LF	100/100	10
PE351014LF	0-10 bar/psi	G1/4B	D+LF	100/100	10
PE351214LF	0-12 bar/psi	G1/4B	D+LF	100/100	10
PE351614LF	0-16 bar/psi	G1/4B	D+LF	100/100	10
PE352014LF	0-20 bar/psi	G1/4B	D+LF	100/100	10
PE352514LF	0-25 bar/psi	G1/4B	D+LF	100/100	10
PE354014LF	0-40 bar/psi	G1/4B	D+LF	100/100	10
PE364414LF	0-60 bar/psi	G1/4B	D+LF	100/100	10
PE364814LF	0-100 bar/psi	G1/4B	D+LF	100/100	10
PE365414LF	0-160 bar/psi	G1/4B	D+LF	100/100	10
PE366014LF	0-250 bar/psi	G1/4B	D+LF	100/100	10
PE366214LF	0-315 bar/psi	G1/4B	D+LF	100/100	10
PE366614LF	0-400 bar/psi	G1/4B	D+LF	100/100	10
PE367014LF	0-600 bar/psi	G1/4B	D+LF	100/100	10



MG1-INOX 100

DN100 pressure gauges.

Part No	Pressure Range	Connection Options*	Box/Master	Min. order
	-76-0 cm Hg	G1/2B	1/30	30
PE509916LF	-1/0 bar/in Hg	G1/2B D+LF	1/30	1
PE5402BL01	-1/0.6 bar	G1/2B	1/30	30
PE5403DL00	-1+1.5 bar/in hg	G1/2B D	1/30	30
PE5404DL00	-1+3 bar	G1/2B D	1/30	30
PE5406DL00	-1+5 bar	G1/2B D+LF	1/30	30
	-1+9 bar	G1/2B	1/30	30
PE5416BL00	-1+15 bar	G1/2B	1/30	30
PE540116LF	0-1 bar/psi	G1/2B D+LF	1/30	30
PE540216	0-1.6 bar/psi	G1/2B D	1/30	30
PE550316LF	0-2.5 bar/psi	G1/2B D+LF	1/30	1
PE550416LF	0-4 bar/psi	G1/2B D+LF	1/30	1
PE550616LF	0-6 bar/psi	G1/2B D+LF	1/30	1
PE551016LF	0-10 bar/psi	G1/2B D+LF	1/30	1
PE551216LF	0-12 bar/psi	G1/2B D+LF	1/30	1
PE551616LF	0-16 bar/psi	G1/2B D+LF	1/30	1
PE552016LF	0-20 bar/psi	G1/2B D+LF	1/30	30
PE552516LF	0-25 bar/psi	G1/2B D+LF	1/30	1
PE554016LF	0-40 bar/psi	G1/2B D+LF	1/30	1
PE564416LF	0-60 bar/psi	G1/2B D+LF	1/30	1
PE564816LF	0-100 bar/psi	G1/2B D+LF	1/30	1
PE565416LF	0-160 bar/psi	G1/2B D+LF	1/30	1
PE566016LF	0-250 bar/psi	G1/2B D+LF	1/30	1
PE566216LF	0-315 bar/psi	G1/2B D+LF	1/30	30
PE566616LF	0-400 bar/psi	G1/2B D+LF	1/30	1
PE567016LF	0-600 bar/psi	G1/2B D+LF	1/30	1

*Options included

D = Dual scale bar/psi (black/red)
 LF = Fimet Watts logo on the dial

Customizations per minimum order quantity

Customizations	Model
Z - Restrictor hole 0.5 mm for ranges < 40 bar	MG1-INOX 63/100
Z0 - Without restrictor hole 3 mm for ranges ≥ 40 bar	MG1-INOX 63/100
RN - Zero filling for ambient temperatures -40° +60 °C	MG1-INOX 63/100
VC - Chemical window	MG1-INOX 63
Customized dials, other scale ranges or connections on req	MG1-INOX 50/63/100

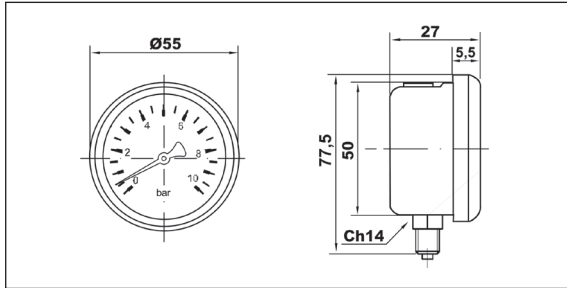
Features

Materials	MG1-INOX 50	MG1-INOX 63	MG1-INOX 100
Case + roll on bezel	Stainless steel AISI 304 with blow-out device	Stainless steel AISI 304 with blow-out device	Stainless steel AISI 304 with blow-out device
Window	Polycarbonate	Vedril PMMA	Vedril PMMA
Dial	White aluminium	White aluminium	White aluminium
Pointer	Black plastic	Black plastic	Black plastic
Pressure connection	Cu-alloy, 14 mm flats	Cu-alloy, 14 mm flats	Cu-alloy, 21 mm flats
Pressure element	Bourdon tube Cu-alloy, soft soldered ≤ 60 bar C-type, > 60 bar helical type Sn-Ag soldered	Bourdon tube Cu-alloy, soft soldered ≤ 60 bar C-type, > 60 bar helical type Sn-Ag soldered	Bourdon tube Cu-alloy, soft soldered ≤ 60 bar C-type, > 60 bar helical type Sn-Ag soldered
Movement	Cu-alloy	Cu-alloy	Cu-alloy
Liquid filling	Glycerine 99.5%	Glycerine 99.5%	Glycerine 99.5%

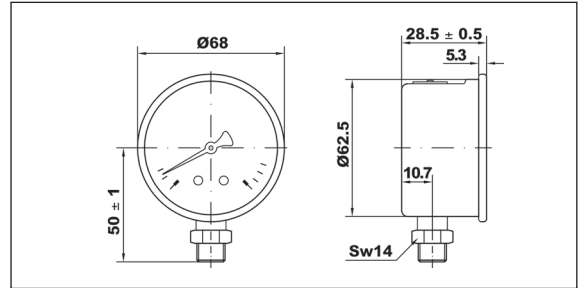
Technical features	
Design	EN 837-1
Working pressure	Steady: 75% of full scale value Fluctuating: 60% of full scale value Short time: full scale value
Temperature limits	Ambient: -20 ... +60°C Medium: +60°C maximum Storage: -20 ... +60°C
Temperature effect	Deviation from reference temperature (+20°C): ±0,04%/1K of the span
Accuracy class: MG1-INOX 50 MG1-INOX 63 MG1-INOX 100	cl. 2.5 cl. 1.6 cl. 1.6
Degree of protection	IP 65 for EN 60 529 / IEC 529
Individual weight: MG1-INOX 50 MG1-INOX 63 MG1-INOX 100	0.130 kg 0.206 kg 0.526 kg

Overall dimensions (mm)

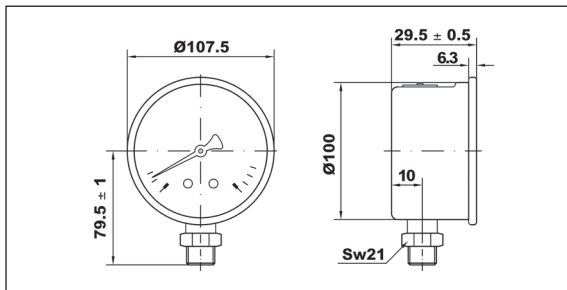
MG1-INOX 50



MG1-INOX 63



MG1-INOX 100



Specification text

Bourdon tube pressure gauges, **MG1-INOX Series**, Watts brand, for pneumatic industry, gases and liquids not viscous, not aggressive and not crystallizing. **Glycerin filled inox case** DN 50-63-100 mm **bottom entry**. Vacuum measures range -1/0 at high pressure up to 600 bar. Temperature limits + 60°C. Accuracy class 1.6. **Compliant with EN 837-1.**



The descriptions and photographs contained in this product specification sheet are supplied by way of information only and are not binding.
Watts Industries reserves the right to carry out any technical and design improvements to its products without prior notice. Warranty: All sales and contracts for sale are expressly conditioned on the buyer's assent to Watts terms and conditions found on its website at www.wattswater.eu. Watts hereby objects to any term, different from or additional to Watts terms, contained in any buyer communication in any form, unless agreed to in a writing signed by an officer of Watts.



Watts Industries Italia S.r.l.
Via Brenno, 21 • 20853 Biassono (MB) • Italy
Tel. +39 039 4986.1 • Fax +39 039 4986.222
infowattsitatia@wattswater.com • www.watts.com