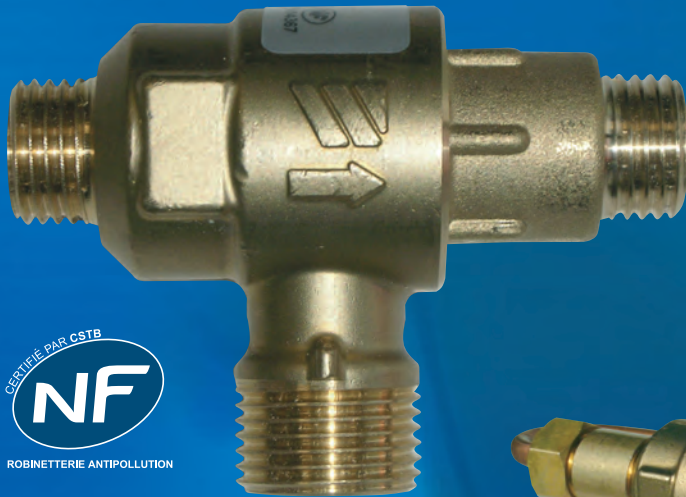


# Backflow preventer CAb

Non controllable backflow preventer with different pressure zones -  
Family C, type A, class b.



CAb

- Designed specifically for integration into wall boiler with maximum power of 70 kW.
- NF EN 14367 approved by CSTB.
- Comply with European standard EN 1717.
- Sanitary approved ACS (F).
- Extra compact size.
- Wide range of tailor-made boiler connections kits – specific OEM versions.

**WATTS<sup>®</sup>**  
**INDUSTRIES**

A Division of Watts Water Technologies Inc.



### Application :

The WATTS CAb device prevents the reverse flow of polluted water from entering into the potable water supply.  
 Series CAb is an OEM backflow preventer designed specifically for integration into wall boiler with maximum power of 70 kW.  
 The device is dedicated for heating feed line.

### Why this new backflow preventer ?

Further the Formal Vote procedure of the CEN product standard EN 14367, covering CAa (former CA) and CAb (former CB) Watts Industries decided to develop the new CAb product.

The implementation on the French national level in NF045R-4 (22/12/2008) makes this new protection device absolutely necessary.

### What are the new features of the CAb ?

Specifically designed to fully comply with the CSTB specifications:

The new CAb meets the new requirements of Document NF045.

In the French technical dossier NF045 / Document Technique 4 (CA class a & b) there are with regards to the mechanical stress, apart from the requirements from the EN 14367 (bending moment), additional demands for traction on the coupling nut and of torque on the connector.

Give the maximum performances of security to the end user:

The rules on the maximum overpressure in the intermediate zone have become stricter, from Relief Valve opening < P1+20% to Relief Valve opening < P1+10%.

Reduce the sanitary risk of bacteria:

Apart from meeting the new EN standards, an extra advantage of the new CAb product is the less rubber surface in-contact-with-drinking water, with less change for growth of bio-film.

Wide range of connection and complete kits:

Several kits, in tailor-made customer specific OEM versions, are available and can be developed.

### Range:

code ref	diameter (inlet)	diameter (outlet)	description	finish
2230839*	Male M10x1	Female M10x1	Single CAb	Raw brass
2230846**	Male M10x1	Female M10x1	Single CAb	Raw brass
2230848	Male G1/4	Male G1/4	Single CAb	Raw brass
2230850	Copper 16mm + Nut G1/2	Copper 18mm + Nut G3/4	Complete CAb kit with 2 stop valves and fittings	Raw brass
2230858	Male G1/4 with cone/8.2	Male G1/4 with cone/8.2	CAb kit with inlet valve	Nickel plated
2230860	G1/4 free nut with spherical seal	Male G1/4 with cone/8.2	CAb kit with 2 stop valve	Nickel plated
2230861	Male G3/8	Male G3/8	CAb kit with 2 stop valve, special handle	Raw brass
2230862	Custom Push Fit	Male G1/4	Single CAb	Raw brass
2230864	Male G1/4	Male G1/4	CAb kit with 2 stop valve	Raw brass
2230867	Custom Fitting with groove	Custom Fitting with groove	CAb kit with 2 stop valve, special handle	Raw brass
2230869	Male G3/8	Male G3/8	Single CAb	Raw brass
2230870	Male G1/4	Male G1/8 Union fitting	CAb with outlet fitting	Raw brass
2230871	Male G1/4	G1/4 free nut	Single CAb	Raw brass
2230887K	Copper tube with comp. ring and M10x1 nut	Male G1/4	Complete CAb kit with outlet valve and fittings for inlet and discharge	Raw brass
2230892K	Male M10x1	Male G1/4	CAb kit with outlet valve	Raw brass
2230893K	G3/8 free nut	Soft PVC tube 14x10	Discharge kit for CB or CAb	Raw brass

\*packing box of 50 pieces - \*\*packing rack of 150 pieces

**OEM integration for boiler:**

Several tailored boiler connections kits available: with or without isolating valves, special plastic valve handle, copper pipe according exact system boiler requirement ...

ref. 2230839



packing box of 50 pieces

ref. 2230846

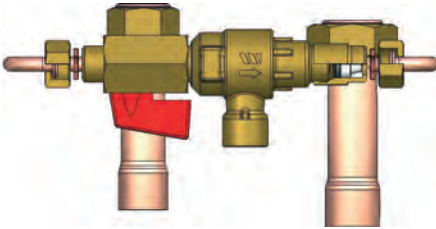


packing rack of 150 pieces

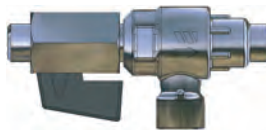
ref. 2230848



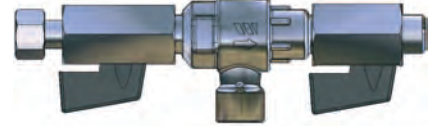
ref. 2230850



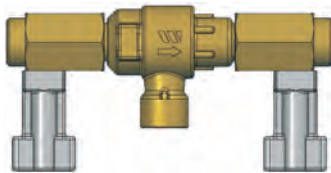
ref. 2230858



ref. 2230860



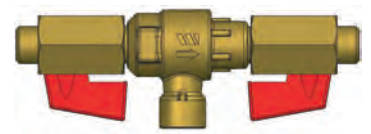
ref. 2230861



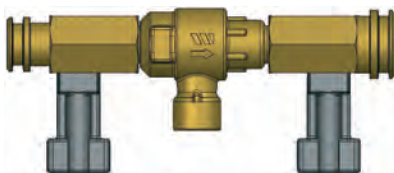
ref. 2230862



ref. 2230864



ref. 2230867



ref. 2230869



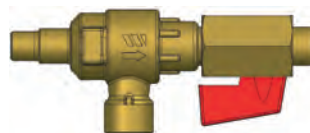
ref. 2230870



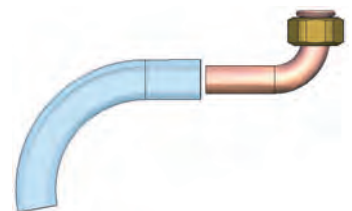
ref. 2230871



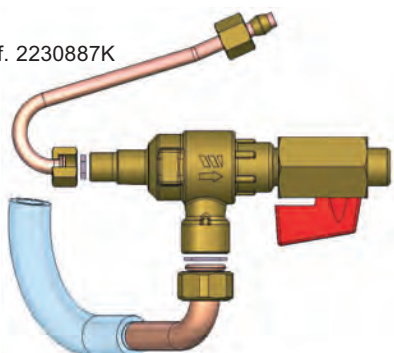
ref. 2230892K



ref. 2230893K



ref. 2230887K



### Construction:

description	material
It consists of an extra compact brass body, with plastic check valves, and stainless steel springs.	
Body	brass CW617N
Spring	stainless steel
Check-valves	POM
Seals	EPDM

### Features:

- Minimal moving parts and simplified construction.
- Ensures superior reliability and longevity.
- Complies with the French NF antipollution standard – NF045.
- NF EN 14367 approved by CSTB.
- 100% factory tested (AMDEC system – factory ISO 9001:2008 certified).
- Materials are sanitary approved: ACS (F).

### Benefits for the manufacturer-fitter:

Reliable: high quality components, know how and expertise guaranteed by the leading manufacturer of backflow protection devices in the World.

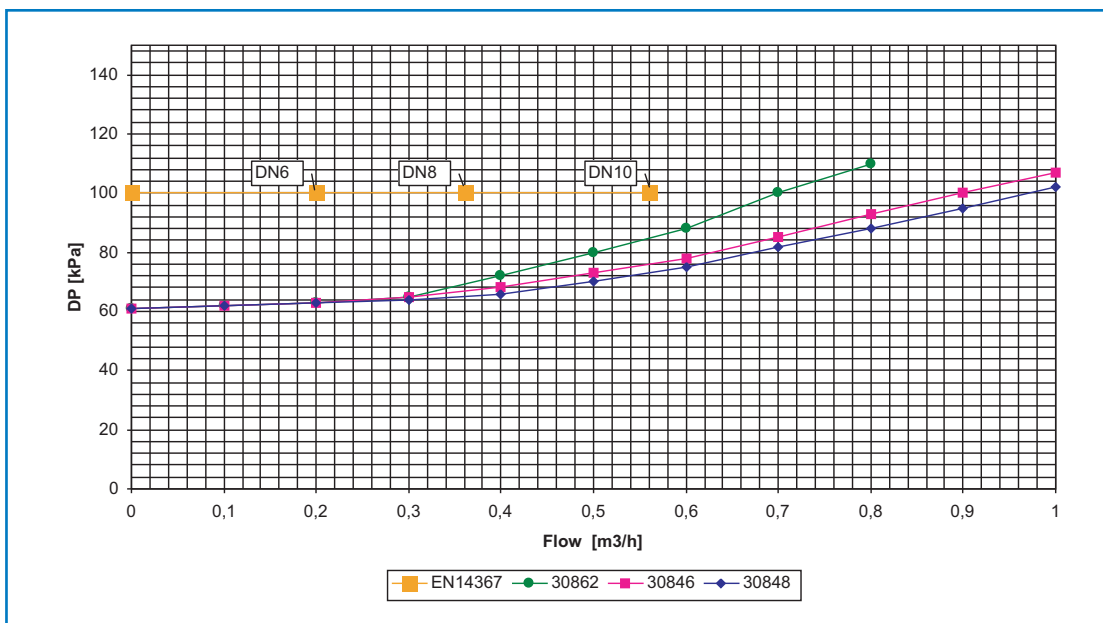
Easy assembly: standard connection, light weight, and tailor-made kits.

Outstanding customer service: product widely distributed across Europe, always close to your manufacturing plant.

### Technical Specifications:

- Maximum temperature: 65°C.
- Maximum pressure: 10 bar.
- Medium: water.
- Working pressure: PN10.
- CAb must be combined with 2 isolating valves.

### Pressure drop curve / headloss:



The photographs, illustrations and descriptions contained in this brochure are given for information only. Watts Industries reserves the right to change the technical specifications or the design of these products without prior notice.



A Division of Watts Water Technologies Inc.

### WATTS INDUSTRIES France

1590 avenue d'Orange CS 10101 SORGUES

84275 VEDENE cedex - FRANCE

Phone +33 (0)4 90 33 28 28 - Fax +33 (0)4 90 33 28 29/39

www.wattsindustries.com

E-mail : info@wattsindustries.fr