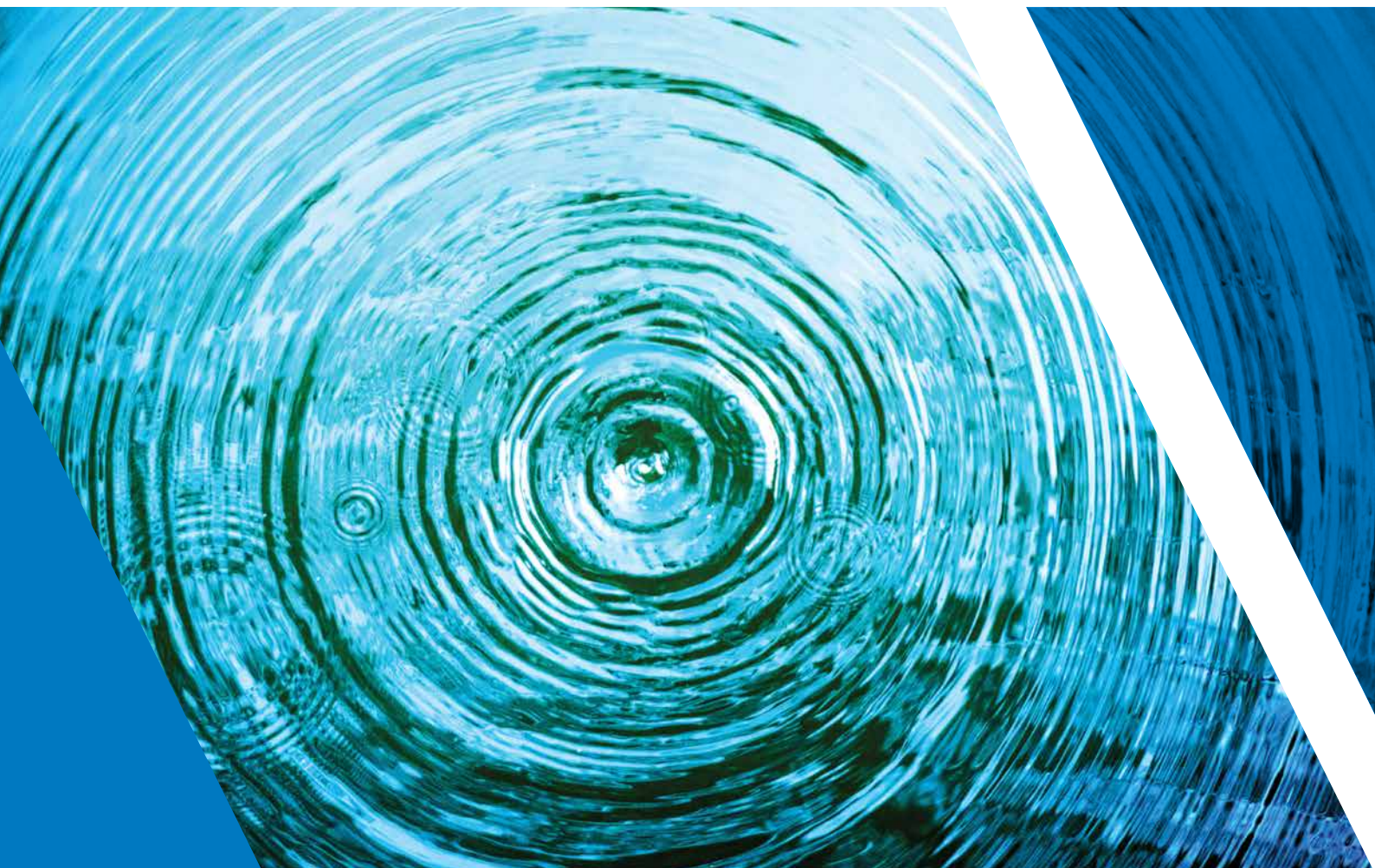


Comfort in balancing

iDROSET® Series CF - the new static balancing valve



Why balancing?

Whether it's a small or large system, the hydraulic balancing of heating and air conditioning systems is essential to distribute the heat where it is needed, **maximising comfort** with accurate balancing of the system **reducing energy usage** as well. Balancing of heating and air conditioning systems is recognised within Europe as key to achieving energy savings. The new Watts valve solves these goals in an easy and effective way. A well-balanced circuit also ensures the system is working in optimum conditions and **reduces the noise** due to the excess fluid speed.



For **ease of installation** and **adjustment** by your engineer



BENEFITS AND ADVANTAGES

- **Easy to set**
- **Easy to read**
- **No other devices to read the flow**
- **Patented and accurate technology for precise calibration**

TECHNICAL DATA

- Max. Operating pressure: PN16
- Operating temperature: -10 to 110°C
- Threaded connections: Female – Female

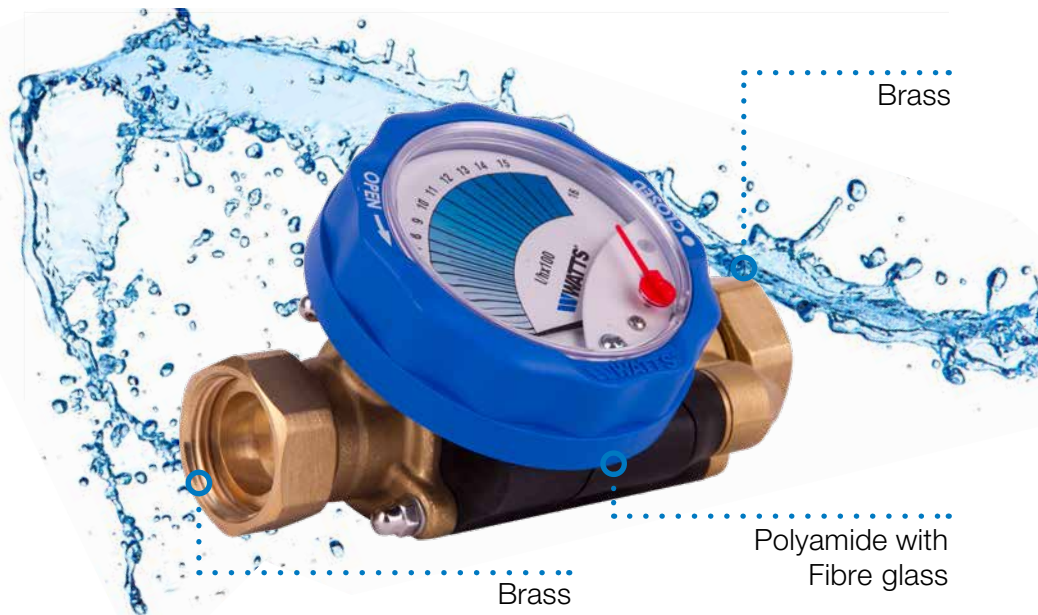
1. **Adjust the hand wheel**, the flow rate will be set
2. **Read the flow rate** on the dial of the valve in real time

iDROSET® Series CF

iDROSET® Series CF is the new generation of the **static balancing valve**. Developed by our R&D Innovation Centre in Italy, iDROSET Series CF is easy to install, adjust and designed to be responsive while saving our customers time, it balances heating, cooling and drinking water distributions quickly and effectively. Unlike standard devices it **covers the complete range** of applications **with a few sizes**. This means that each diameter has a wide range of flow rate.

Featuring patented, accurate technology, the user-friendly iDROSET delivers precise calibration that's straightforward to set and real-time information that's easy to interpret without any other devices.

The valve body is manufactured from brass and composite, featuring an ergonomic shape that allows the valve to be deployed in a range of ways with a multifunctional hand wheel that sets the flow rate.



WATTS®

The descriptions and photographs contained in this document are supplied by way of example and illustration only. Watts Industries reserves the right to carry out any technical and design improvements to its products without prior notice. Watts hereby objects to any term, different from or additional to Watts terms, contained in any buyer communication in any form, unless agreed to in a writing signed by an officer of Watts.

Watts Industries Italia S.r.l.

Via Brenno, 21 • 20853 Biassono (MB) • Italy
Tel. +39 039 4986.1 • Fax +39 039 4986.222
infowattsitatia@wattswater.com • www.watts.com