

## Challenges in Data Center Construction

In recent years, with the acceleration of the construction of domestic information systems, the number of data center buildings has shown an upward trend. Due to intensive layout and long-term operation requirements of equipment in data centers, various systems in the buildings need to be stable and reliable, which specifically include the following points:

- Operation of water system requires absolute reliability and sealing
- IT equipment require long-term continuous operation, and air conditioning systems require strong stability
- The temperature and humidity of the IT equipment environment should be constant and precisely controlled
- Operation and maintenance requirements continue to increase, and air conditioning equipment require online maintenance support.
- The data center consumes much power, requiring the air conditioning system to save energy, reduce consumption, and reduce the PUE value

### Intelligent Watts



#### Reliable Quality

Reduce the risk of water leakage and guarantee the safe operation of IT equipment



#### Stable Function

Guarantee 24h uninterrupted work of the system



#### Precise Control

Guarantee IT equipment operation in a precise constant temperature and humidity environment



#### Energy Saving and Consumption Reduction

Low resistance and high efficiency valve design to reduce operating energy consumption of air conditioning systems



#### Online Maintenance

Timely response to maintenance to guarantee the normal operation of the data center

” **Watts Fluid Solutions Europe & BLÜCHER designs and produces in Europe more than 90% of the products it sells.**

## Data Center Solutions

**SOCLA® / VALPES® / MICROFLEX® / iDROSET® / WATTS PRV® / POWERSEAT® / BLÜCHER® /**

Joseph Watts founded our company in 1874 on the belief that water boilers in textile mills shouldn't explode. What started with a pressure relief valve in a tiny New England machine shop, has paved the way for today's high-quality, worldwide water solution technologies. From melting ice on entire city blocks from the ground up, to filtering safe drinking water in isolated, weather disaster zones, you need water and water needs Watts.

We are a **global leader of quality water solutions** for residential, industrial, municipal, and commercial settings. Our family of brands offers one of the most varied product lines in the world, with world-class, water-related solutions focused on:

- Drainage
- HVAC and Hot Water
- Plumbing & Flow Control
- Water Quality & Rainwater Harvesting

[WattsWater.eu](http://WattsWater.eu)



Your **WATTS** Partner™



THE NETHERLANDS: Watts Water Technologies EMEA B.V. • Strawinskylaan 3099 • 1077 ZX Amsterdam

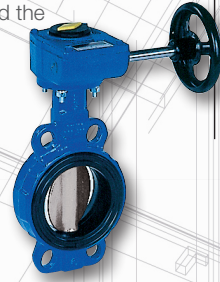
[WattsWater.eu](http://WattsWater.eu)





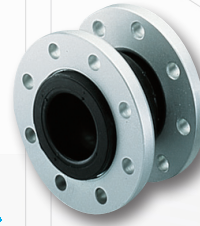
### Butterfly valves - Sylax

**Socla - a WATTS brand.** World renowned for its high quality and excellent performance in industrial process or general circuit applications. Enjoys referencing and authorization for industries ranging from water and the naval industry to fire prevention systems.



### ZKB Rubber expansion joint

**Socla - a WATTS brand.** Absorbs expansions and vibrations in a pipe network. Diminishes hammering, reduces noise and prevents electric currents from spreading.



### AXMART® and AgTURN®

**Valpes - a WATTS brand.** The actuators are dedicated to control systems, reliable and compatible with all valves, they allow a total connectivity and a safe management of your networks. A Valpes & Bar AUTOMATION team is dedicated to customer support.



### Process Check-Valves

**Socla - a WATTS brand.** Our check-valves provides high mechanical and hydraulic performances, excellent sealing for high or low pressure, prevents water hammering, and noiseless operation.



### Antipollution devices

**Socla - a WATTS brand.** Protects drinking water systems against polluted water returning to the supply, not only after the water meter, but also everywhere a backflow risk is identified. This valve should be chosen wherever perfect water-tightness and on-site dismantling are required, together with excellent hydraulic performances.



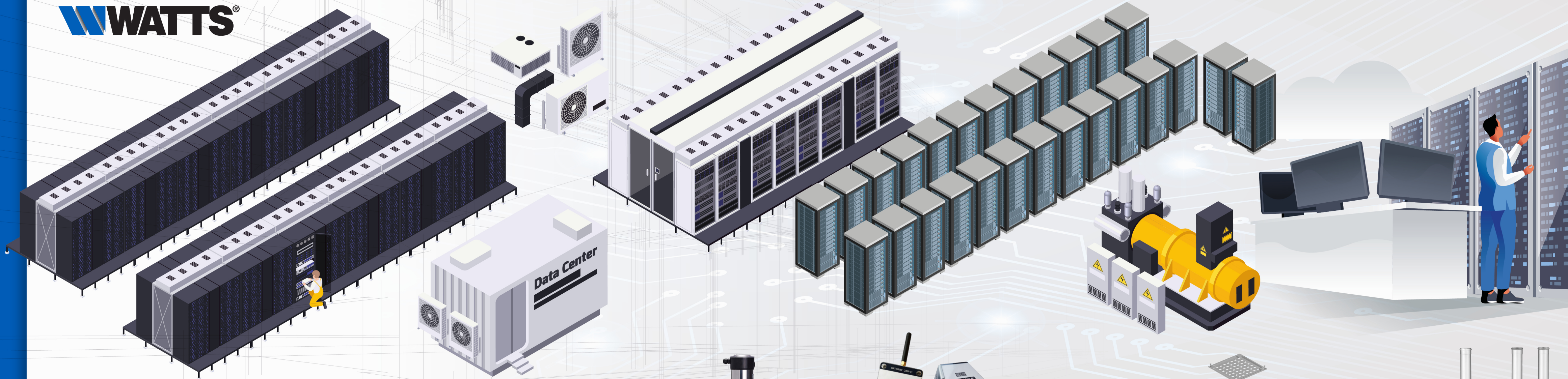
### Pre-insulated pipes

**Microflex - a WATTS brand.** Pre-insulated pipe suitable for use in heating, cooling and sanitary applications. Microflex is fully corrosion free with outstanding flexibility and aging resistance. Unique double wall outside casing in PE-HD providing extra protection to the inner part of the tube.



### Balancing valve - iDROSET®

**iDROSET - a WATTS brand.** iDROSET® Series CF is the new generation of static balancing valve. It balances heating, cooling and drinking water distributions quickly and effectively. It is generally admitted that the valve significantly reduce commissioning costs by more than 50% compared to projects using conventional static balancing valves.



### Pressure Reducing Valves

**Socla - a WATTS brand.** Installed at the main water entry point, and at each point of the water connections that supply the various applications. It brings comfort by lowering the noise of water circulation and respecting acoustic norms. It allows to obtain a normal flow whatever the simultaneous uses. With its unique conception makes it is resistant to scale or impurities. It does not require any maintenance and has no risk of blockage.



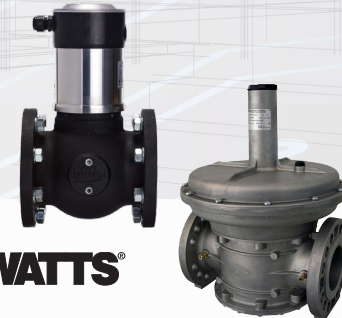
### Valves for fire sprinklers

**Socla - a WATTS brand.** Coupled with Automatic Control Valves to control water flow or pressure, they assure an accurate control. Used to ensure uninterrupted water service during emergencies, maintain a constant liquid level in tanks, automatically reduce a higher upstream water pressure to a constant downstream pressure.



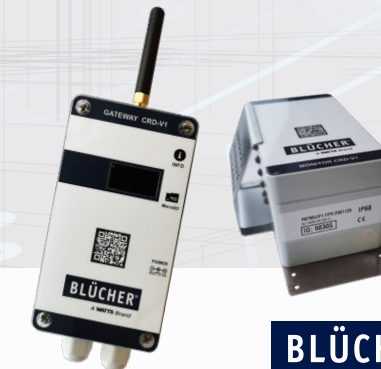
### Gas shut-off valves Gas pressure regulators

**POWERSEAT - a WATTS brand.** The Power-seat® electro-hydraulic gas shut-off valve allows the control and safety shut-off of low pressure combustible gases in pipes. This eco-friendly valve uses just 6% of the power that a comparable magnetic solenoid valve uses.



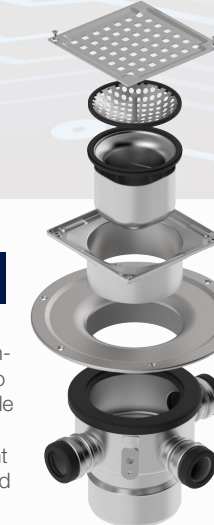
### BLÜCHER® Connected Roof

**BLÜCHER - a WATTS brand.** Do you know the performance of your roof? Or if your roof drains are clogged? Or if you have water ponding? With BLÜCHER Connected Roof you can minimize risk of damage to constructions and inside building facilities and at the same time increases lifetime of the roof.



### BLÜCHER® Drain

**BLÜCHER - a WATTS brand.** We offer floor drainage systems for all applications, from bathrooms to large industrial and commercial facilities. Our reliable drainage solutions in stainless steel offers easy access for cleaning, supreme lifetime, and excellent flow capacity. Our floor drains have been developed in a modular system providing numerous possible combinations for any type of flooring.



### BLÜCHER® EuroPipe

**BLÜCHER - a WATTS brand.** A durable and labour-saving solution that can be used above and below ground in a variety of applications. Weighing only a third of cast iron solutions, this push-fit drainage pipework system can be installed by just one person - thus saving time and money. BLÜCHER® EuroPipe is designed to keep up the flow through reliable connections while adding value and longevity to your drainage projects, installations and business.

