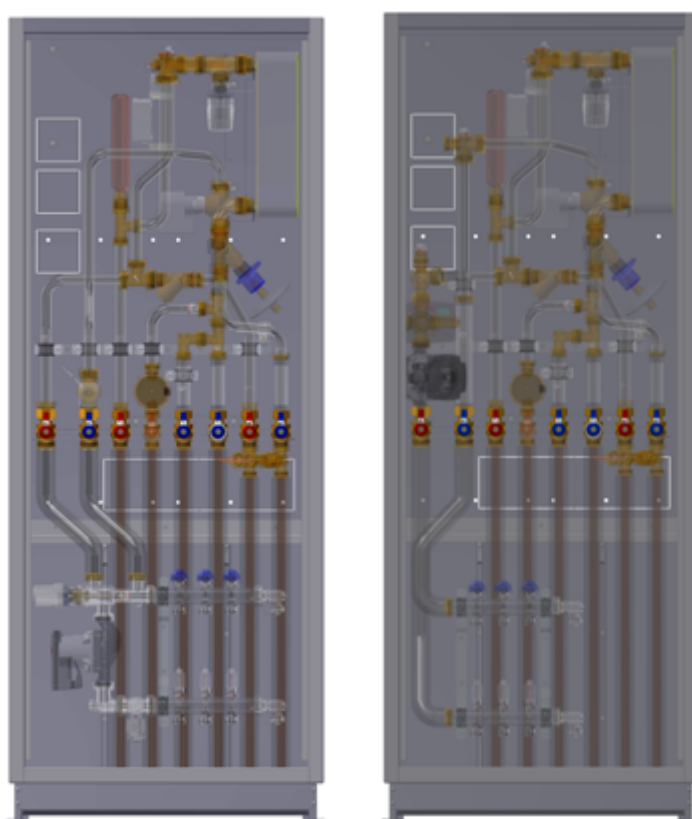


HIU2VSAI and HIU2VSUI

Wall-mounted and flush-mounted combi-cabinets for HIU 2 Heat Interface Unit with or without insulation

**Installation and operating manual
(translated from the original operating manual)**



Content

1 General information.....	2
1.1 Important notes about the Installation and Operating Manual ..	2
1.2 Product features.....	2
2 Safety	3
2.1 Safety notices.....	3
2.2 Important safety information	3
2.3 Intended use	3
2.4 Foreseeable misuse.....	3
2.5 Operator's responsibility	3
2.6 Users.....	4
3 Installation and commissioning	4
3.1 Wall mounting	4
3.2 Mounting the HIU2 combi-cabinet.....	6
3.3 Installation options.....	9
4 Disposal	10
4.1 Return to manufacturer	10
4.2 Informing authorities and the manufacturer.....	10
5 Warranty	10

1 General information

1.1 Important information about the Installation and Operating Manual

NOTICE

The operator is responsible for ensuring adherence to the local laws and regulations (e.g. accident prevention regulations, etc.).

Incorrect operation or operating the system contrary to the specifications shall void all rights to any warranty claim.

This Installation and Operating Manual

- is part of the combi-cabinet
- contains instructions and information for the safe and correct installation and commissioning of the combi-cabinet
- must be available to all users throughout the entire service life of the combi-cabinet
- is intended for trained personnel who are familiar with the applicable standards and provisions and, in particular, with the relevant safety concepts and the operation and maintenance of the combi-cabinet
- is protected by copyright and may not be altered without the manufacturer's permission
- may not be made accessible to unauthorized personnel, either in original form or as a copy.

1.2 Product features

- Sturdy casing made of sheet steel
- All system connections with G 1" and G ¾" thread and flat sealing
- Compact, space-saving design
- Modular design and suitable for connection to the intended combi-cabinets

2 Safety

2.1 Safety notices

▲ DANGER

DANGER indicates an imminent danger that may cause serious physical injury or death if the appropriate safety precautions are not in place.

▲ WARNING

WARNING indicates a danger arising through incorrect behaviour (e.g. misuse, disregarding notices, etc.) that may cause serious physical injury or death.

▲ CAUTION

CAUTION indicates a potentially dangerous situation that may cause minor or slight injuries if the appropriate safety precautions are not in place.

NOTICE

NOTICE indicates a situation that may cause material damage if the corresponding precautions are not taken.

2.2 Important safety information

- Read this operating manual carefully before use.
- Maintenance, cleaning and repair work may be carried out by trained specialist personnel only.
- If the combi-cabinet is damaged or is not functioning correctly, it must no longer be used. In this case, contact your specialist dealer immediately.
- Observe the maintenance instructions and intervals.
- Protect the combi-cabinet against the effects of weather.
- Never use the combi-cabinet outdoors.
- The combi-cabinet may only be used in accordance with its intended use.

2.3 Intended use

Combi-cabinet for the installation of the HIU 2 Heat Interface Unit and hydraulic accessories.

The combi-cabinet is not intended for use by persons (including children) with reduced physical, sensory or mental capabilities, or lack of specialist knowledge or experience.

2.4 Foreseeable misuse

The following is regarded as foreseeable misuse:

- operating the combi-cabinet contrary to the specifications
- using the combi-cabinet not as intended
- making modifications to the combi-cabinet not agreed with the manufacturer
- using replacement or wear parts not approved by the manufacturer
- operating the combi-cabinet outdoors (parts and components are not UV-resistant)

2.5 Operator's responsibility

The operator must ensure that:

- the combi-cabinet is only used for its intended purpose
- the combi-cabinet is installed, operated and maintained according to the specifications in the Installation and Operating Manual
- the combi-cabinet is only operated according to local directives and occupational health and safety regulations
- all precautions have taken to avoid hazards originating from the combi-cabinet
- all precautions for first aid and fire suppression are carried out
- only authorized and trained users have access to and operate the combi-cabinet
- users have access to this Installation and Operating Manual at all times

2.6 Users

Only qualified persons may install and operate the combi-cabinet or perform maintenance work.

Operators

An operator is deemed to be qualified if they have read this operating manual and understood the potential hazards associated with improper behaviour.

Fitters/commissioners

A fitter or commissioning engineer is capable of performing work on the combi-cabinet and detecting and preventing potential hazards taking into consideration the applicable standards, provisions, regulations and laws and his/her technical training and technical knowledge.

3 Installation and commissioning

NOTICE

Installation and commissioning of the combi-cabinet must be performed exclusively by specialist personnel who have been duly trained and authorized by the manufacturer.

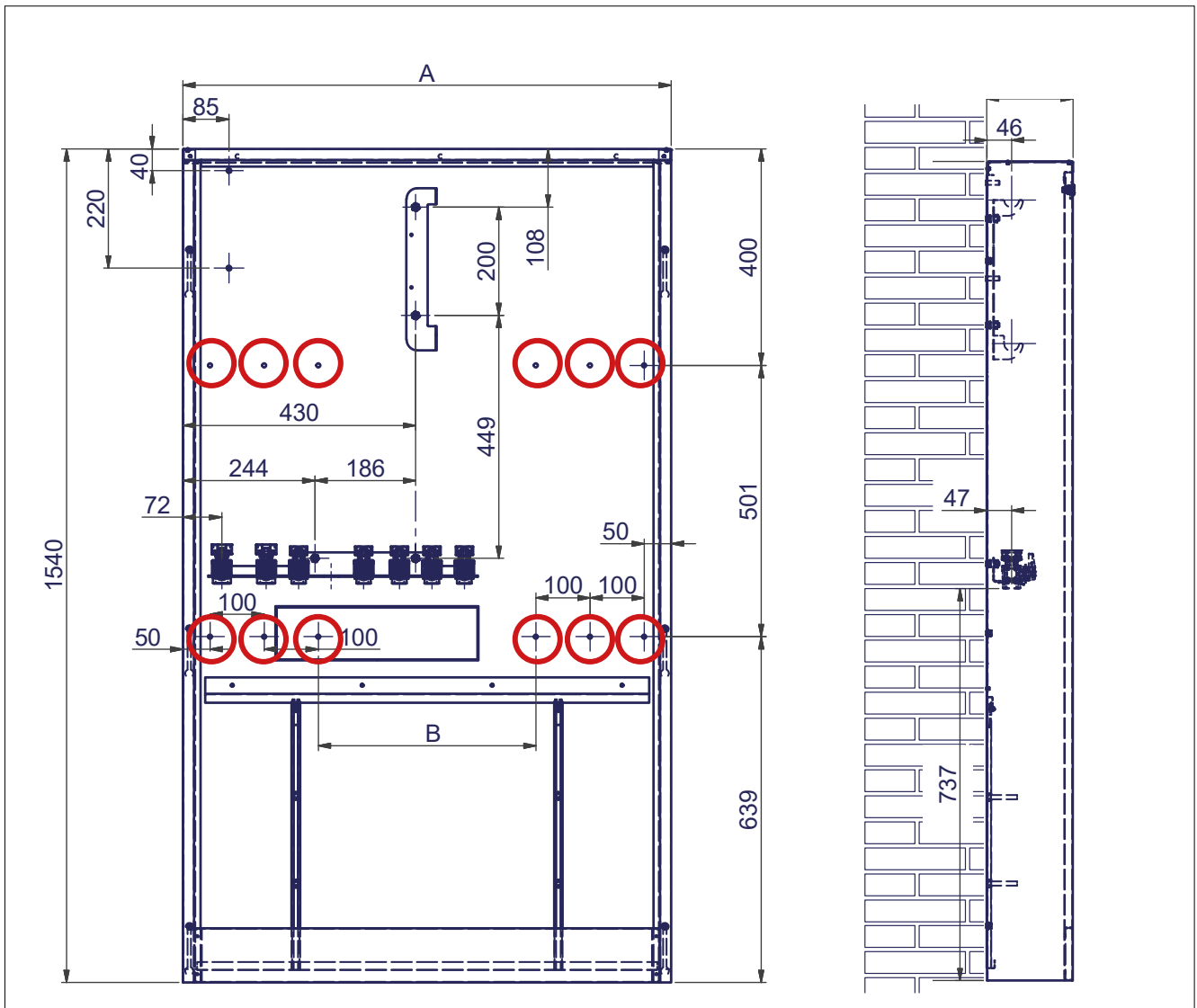
3.1 Wall mounting

NOTICE

Suitable mounting hardware must be used for wall mounting.

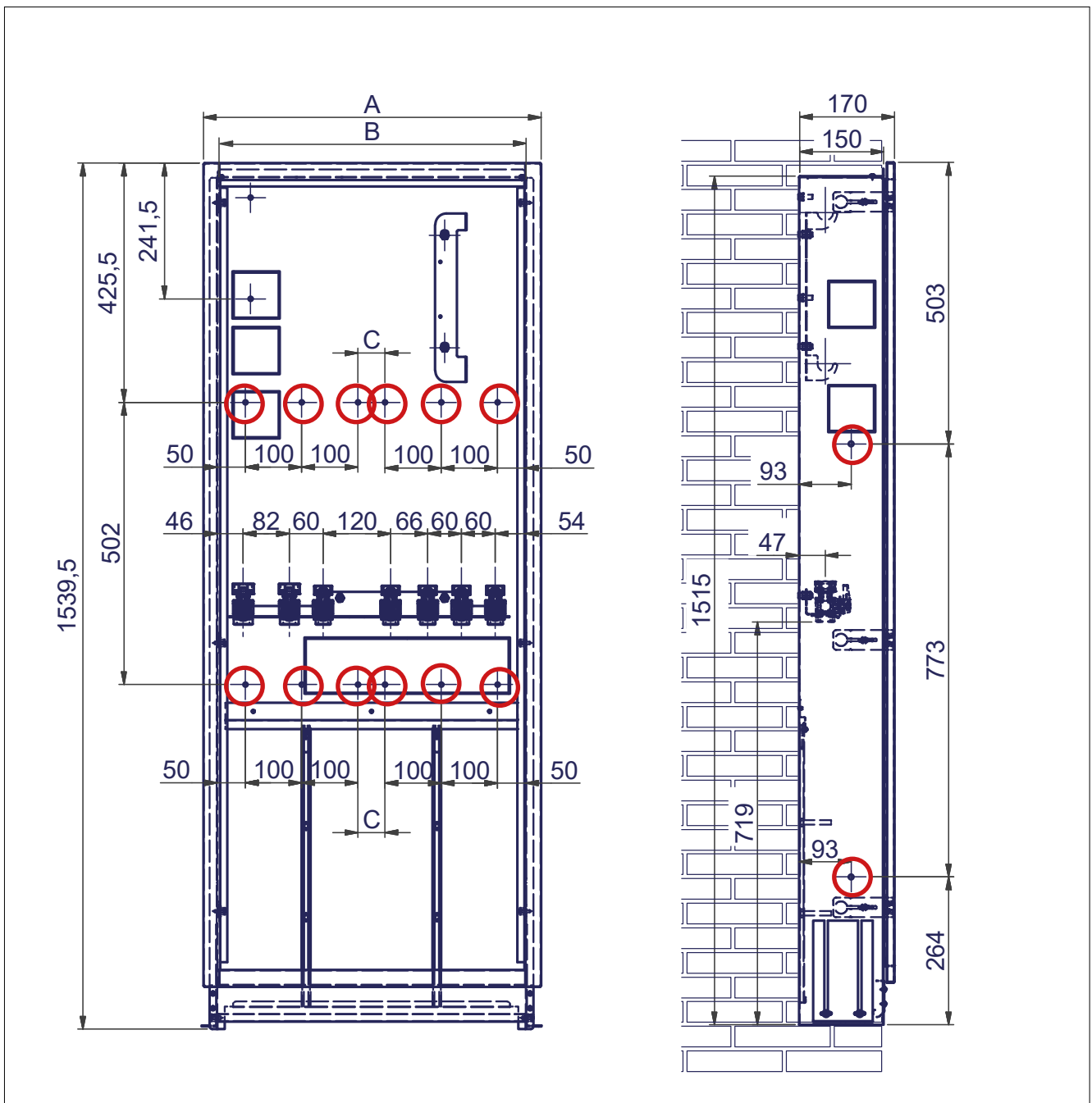
Combi-cabinet for the HIU 2 Heat Interface Unit, wall-mounted

Type (without insulation)	Type (with insulation)	A [mm]	B [mm]
HIU2VSA-2	HIU2VSAI-2	600	102
HIU2VSA-3	HIU2VSAI-3	750	252
HIU2VSA-4	HIU2VSAI-4	900	402
HIU2VSA-5	HIU2VSAI-5	1100	602



Combi-cabinet for the HIU 2 Heat Interface Unit, flush-mounted

Type (without insulation)	Type (with insulation)	A [mm]	B [mm]	C [mm]
HIU2VSU-2	HIU2VSUI-2	600	550	48
HIU2VSU-3	HIU2VSUI-3	750	700	198
HIU2VSU-4	HIU2VSUI-4	900	850	348
HIU2VSU-5	HIU2VSUI-5	1100	1050	548



NOTICE

Before first use, check all screw connections and tighten if necessary!

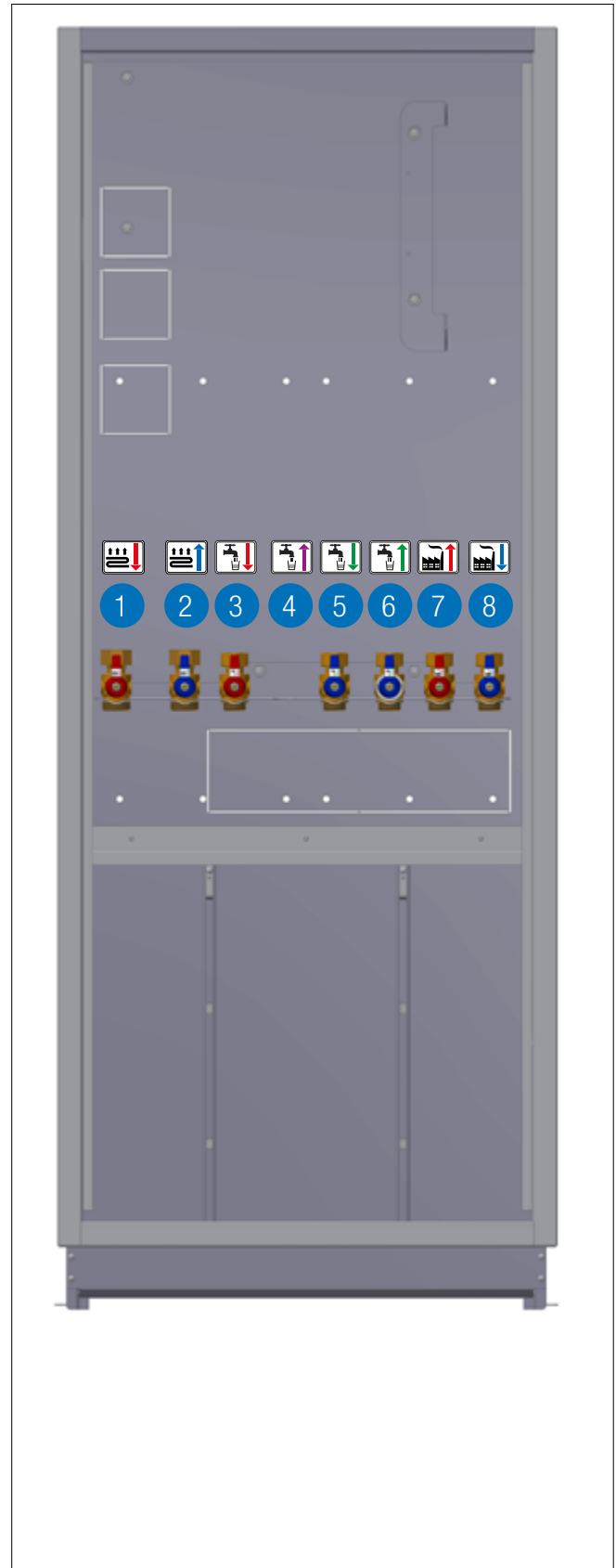
Torque:

- 3/4" screw connection: 35 Nm
- 1" screw connection: 55 Nm

3.2 Mounting the HIU2 combi-cabinet

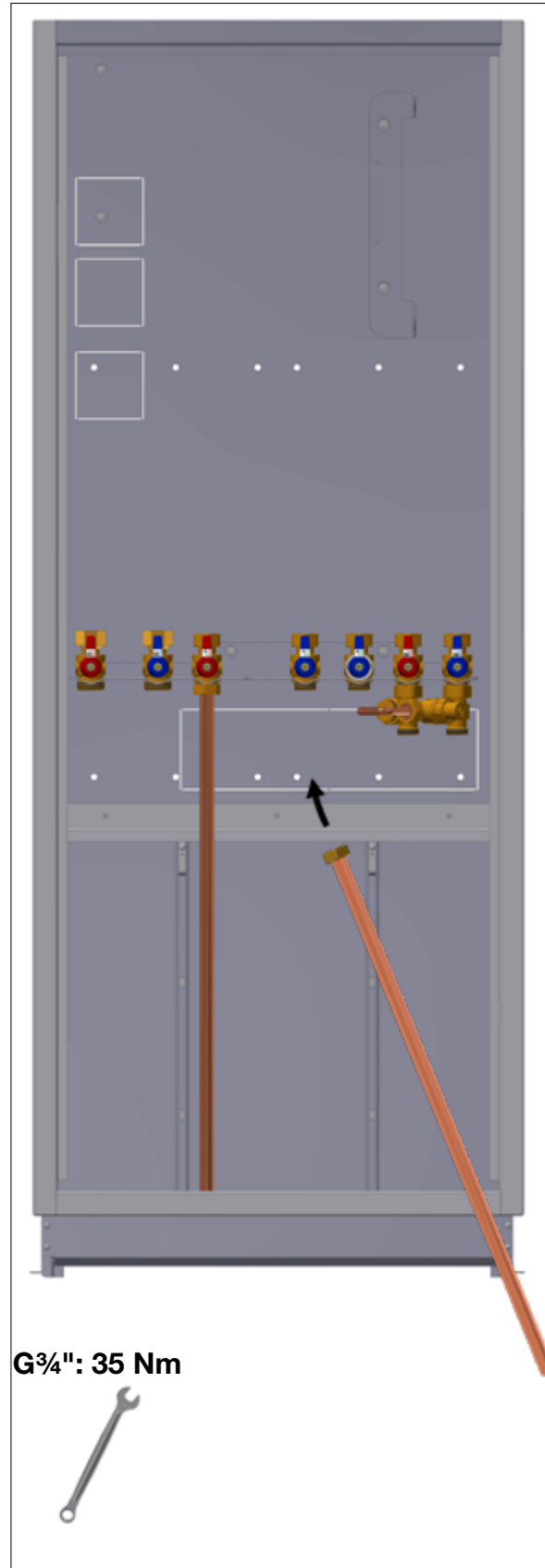
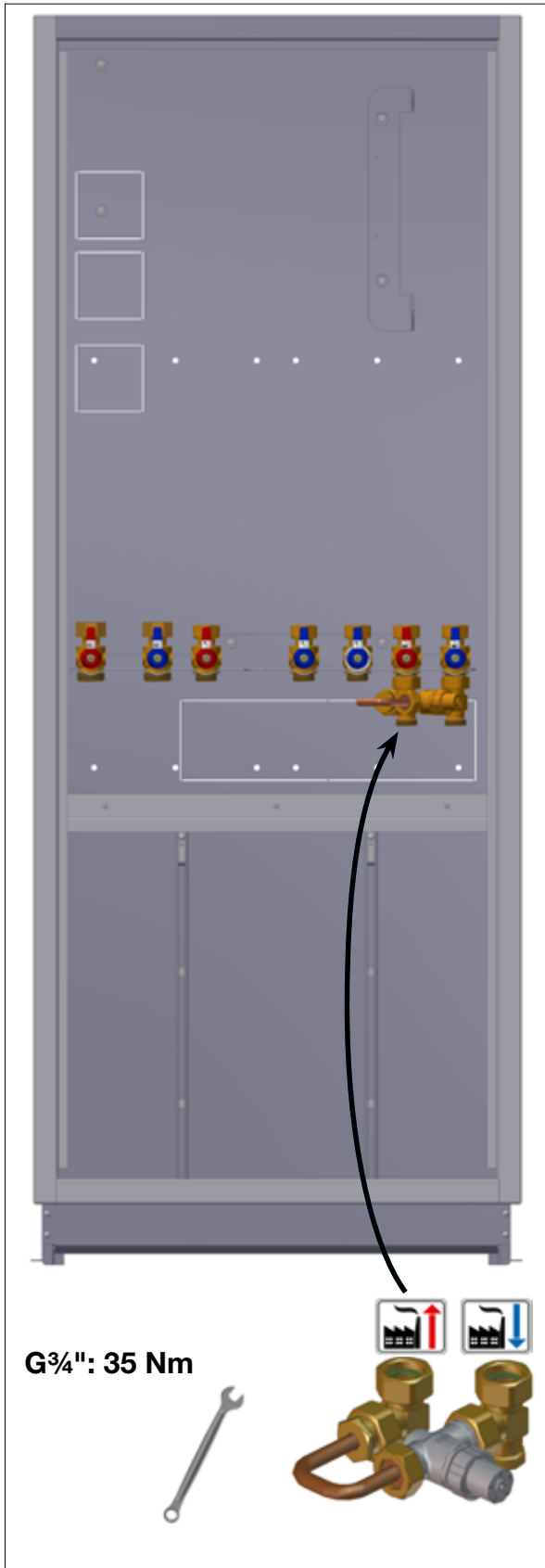
1. Mount the combi-cabinet (see installation diagram on page 4 and 5).

- 1 Heating flow circuit
- 2 Heating return circuit
- 3 DHW outlet
- 4 Domestic water circulation inlet
- 5 Domestic cold water outlet
- 6 Domestic cold water inlet
- 7 Primary flow
- 8 Primary return

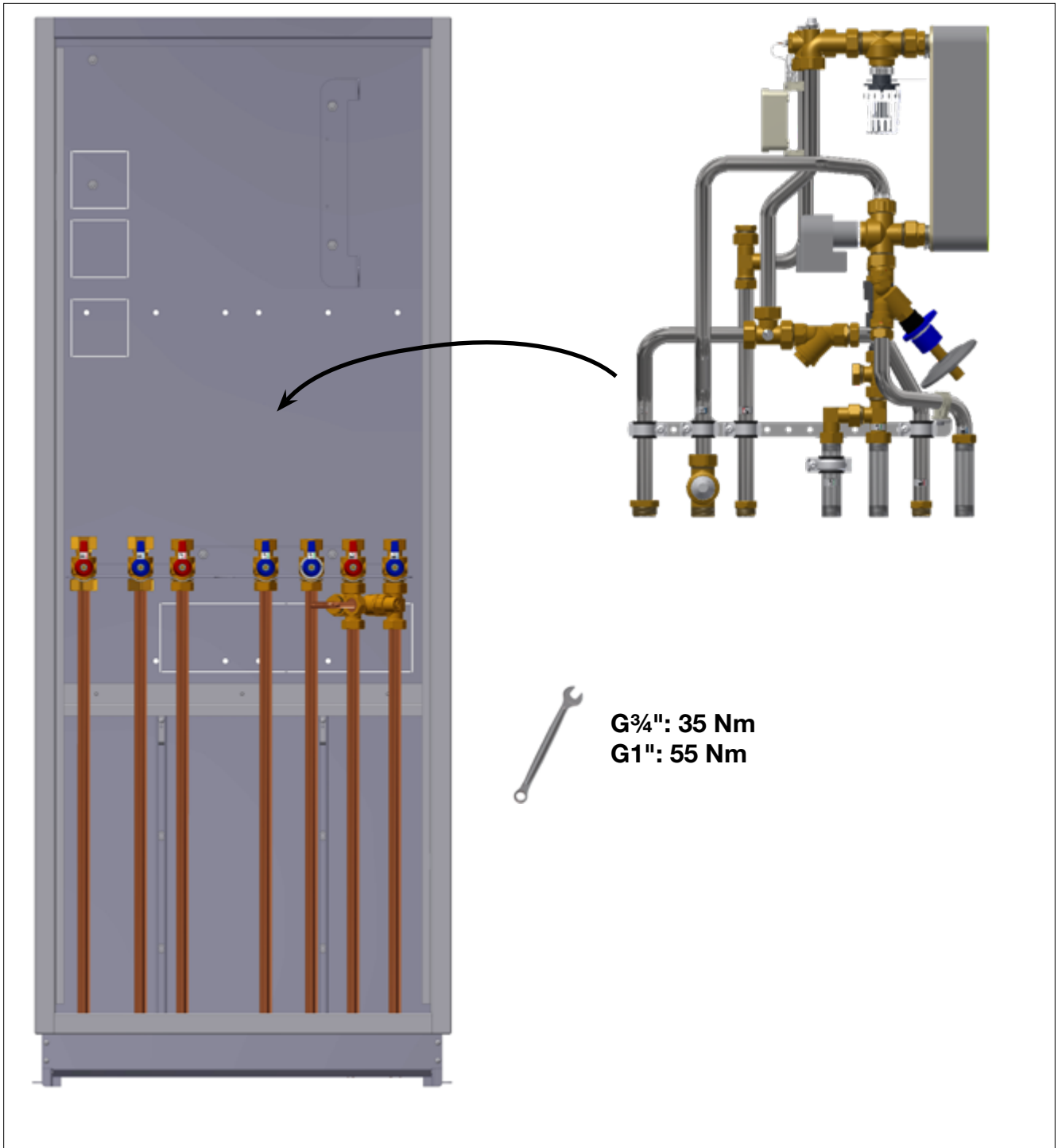


2. Option: Install the thermal circulation bypass.

3. Connect pipes.

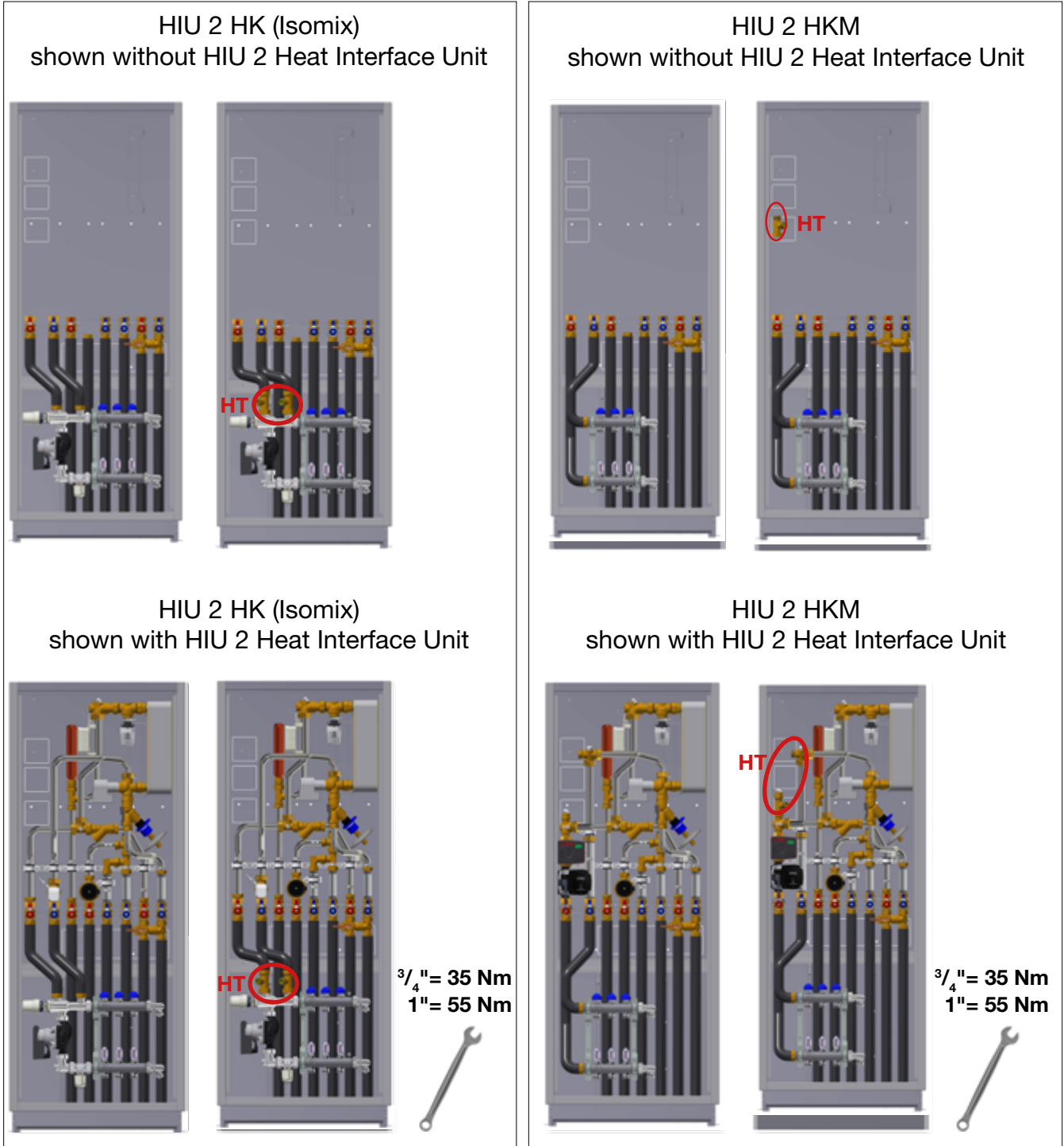


4. Install the HIU 2 Heat Interface Unit.



3.3 Installation options

HIU 2 VSA and HIU 2 VSU combi-cabinets



HT = High temperature connection

4 Disposal

⚠ WARNING

Improper disposal can lead to contamination of the environment and groundwater!

When disposing of components and operating materials, the provisions and guidelines of the country of use must be observed.

1. Remove the combi-cabinet in the correct way or engage a specialist company to do this.
2. Separate the subassemblies and components into recyclable materials, hazardous substances and operating materials.
3. Dispose of the subassemblies and components in accordance with local laws and provisions or take them to a recycling facility.

4.1 Return to manufacturer

Contact the manufacturer if you wish to return the combi-cabinet or component parts.

4.2 Informing authorities and the manufacturer

Inform the manufacturer when decommissioning and disposing of the combi-cabinet for statistical purposes.

5 Warranty

WATTS products are tested extensively. WATTS therefore guarantees only the replacement or, at the sole discretion of WATTS, the free-of-charge repair of components of the supplied products where these, in the opinion of WATTS, exhibit verifiable manufacturing faults. Warranty claims due to defects or defects of title may be asserted within one (1) year of delivery/transfer of risk. Excluded from the warranty are damages attributable to normal product wear or friction and damages resulting from modifications or non-authorized repairs on the products, for which WATTS rejects all claims for compensation (direct or indirect). (For more detailed information, please refer to our website.) In all cases, supply is subject to the General Terms and Conditions, which can be found at www.wattswater.eu/gtc/.

The descriptions and photographs contained in this product specification sheet are supplied by way of information only and are not binding. Watts Industries reserves the right to carry out any technical and design improvements to its products without prior notice.

Warranty: all sales and contracts for sale are expressly conditioned on the buyer's assent to Watts terms and conditions found on its website at www.wattswater.de/agn Watts hereby objects to any term, different from or additional to Watts terms, contained in any buyer communication in any form, unless agreed to in a writing signed by an officer of Watts.
