



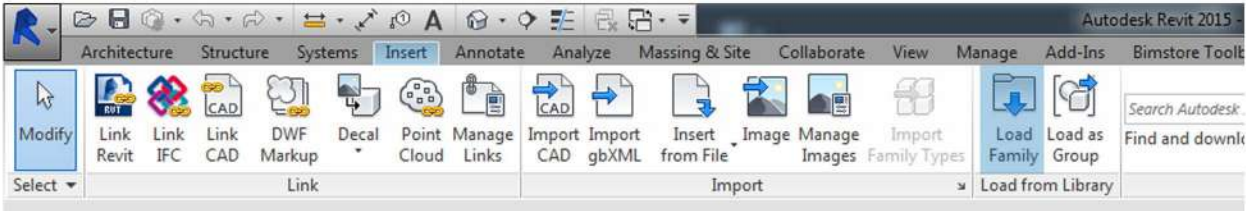
User Guide WATTS

Revit 2017

Loading the components into your project

You can load the chosen component into your project using the following method.

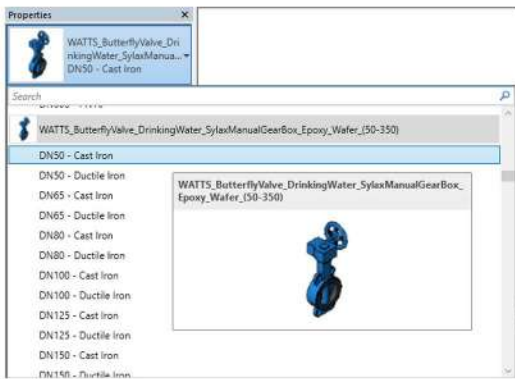
1. Open the Revit file containing your project.rvt and navigate to an appropriate view.
2. Go to the insert tab on the Revit ribbon and select 'Load Family'



Placing the Components

Now the components are loaded into your project you need to place them into your model. As the BIM files are created as pipe accessories you will need a pipe in order to break the pipe accessory into. Please ensure that you have the correct pipe type set up to coordinate with the correct pipe fitting.

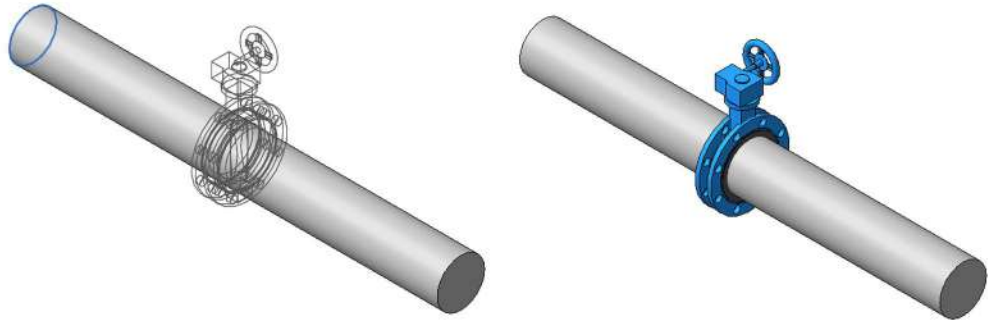
1. On the main Revit ribbon go to the 'Systems' tab. Under 'Plumbing and Piping' there is a button for 'Pipe Accessory' as indicated in the image.



2. With 'Pipe Accessory' selected the types will appear in the 'Properties' dialogue box, typically on the left hand side of the screen. From the drop down menu at the head of this box you can see the type selected and you can click to reveal additional types and families that are loaded in the project.

Select the DN you would like to place.

3. With the component selected you can now hover the cursor near the pipe and the component will appear ghosted against the pipe. The component will rotate to be in the same orientation as the pipe. Simply click the mouse to place the component.

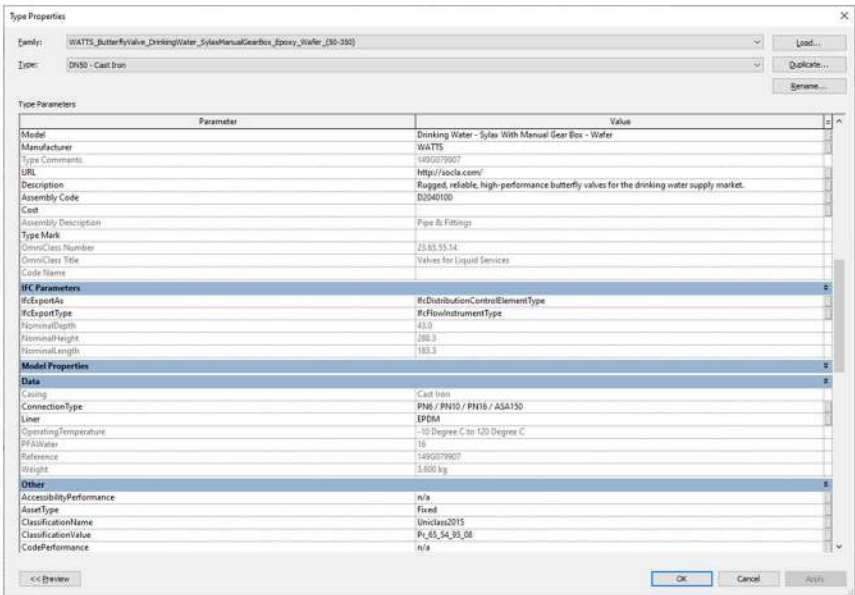


4. The component is now part of the piping system. There are various options available to modify the setting out and positioning of the fitting. Firstly, when viewed in plan view, the flip arrow can be used to mirror the position of the component.

If you require the component to be rotated around the pipe, simply go to a 3D view and select the component. You will notice a rotate and flip symbol appear. By clicking these symbols the component will rotate/flip along the component and each click.

WATTS Manufacturer specific data

The WATTS families contain a host of technical and manufacturer specific data to assist the user when building up their project or when scheduling. To access the data embedded into the families, simply select the component and click the 'Edit Type' button at the head of the 'Properties' tab.



Other Notes

These components are for design intent only and the data contained within should be treated as such. Please contact the manufacturer for more details and product literature.

Revision

Version 1.0 – First Issue



Spaceworks
Benton Park Road
Newcastle Upon Tyne
NE7 7LX

+44(0)844 800 6660
info@bimstore.co.uk
www.bimstore.co

© copyright bimstore 2019